



SLC  
Multi-Purpose  
GNSS Receiver



# SLC Multi-Purpose GNSS Receiver

The Ultimate Expandable Handheld  
Smart GNSS Sensor with Multi Constellation Tracking



Swedish  
Design



Lightweight



Bluetooth



Multi  
Constellation  
Tracking



Long Life  
Battery



Windows  
Compatibility



Android  
Compatibility

iOS

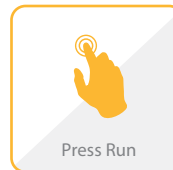
iOS  
Compatibility



Internal 3.5G  
GSM Modem



Internet  
RTK  
Technology

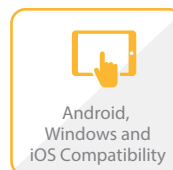


Press Run

## Fully Automated GNSS Receiver

SLC is a multi-purpose, surveying grade GNSS receiver with industrial modem for internet and one button operation.

## Multiple Expansion Possibilities



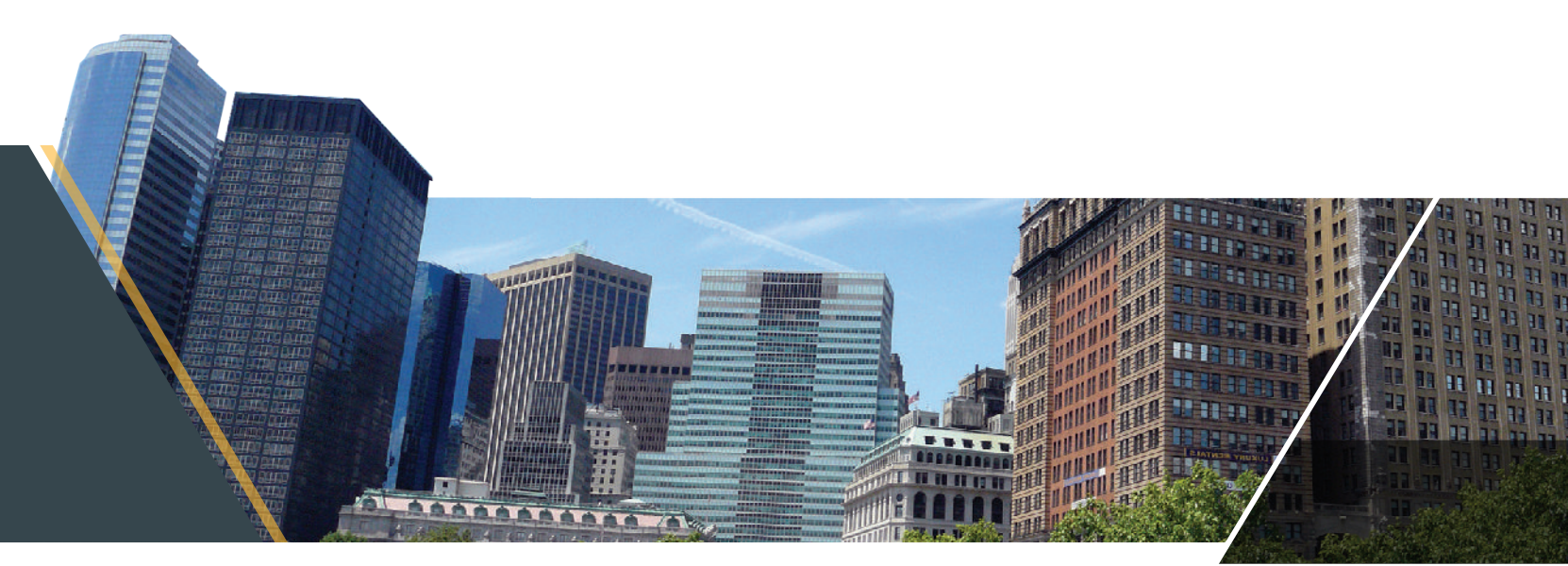
Android,  
Windows and  
iOS Compatibility

SLC GNSS sensor includes 2 mounting plates to attach your tablet computer as its display, running your Apps. Its industrial grade 3.5G modem applies available RTK corrections for cm accuracy. The USB/RS232 serial connection allows for external power, UHF radio connection or wired connection to a display.

## Unlimited Application Areas

Any software running on Windows,





Android or iOS accepting GNSS position over a serial port (Direct or over Bluetooth) can be used. This makes SLC the high precision positioning solution to virtually unlimited number of applications.

### Latest GNSS Technology

SLC utilizes a Novatel\* GNSS OEM receiver with all options enabled. The GNSS board can be controlled through the RS232 Serial Port or Bluetooth for custom applications. The SLC tracks multi constellation satellite as well as SBAS satellites. The SLC is ready to use RTK corrections from NTRIP casters and Satlab InternetRTK servers.



### Antenna Options



SLC contains a convenient internal full constellation dual frequency tracking antenna for centimeter accuracies in your hand. For even greater precision, an external geodetic antenna kit and pole mount option is available.

### Industrial Approach

The sleek and rugged Swedish designed SLC, is easy to hold and designed for long and reliable field work, backed by Satlab's standard 2 year warranty.



### Fast and Reliable Technical Support



One of the greatest benefits with Satlab is support. We ensure spare parts are always available and easy to access from any place in the world. We keep our distribution network apprised on all software updates and support them with everything needed to guarantee a great user experience.

\*NovAtel is a registered trademark of NovAtel Inc.



# Fully Automated GNSS Receiver



Internal 3.5G  
GSM Modem

Internal GNSS  
Antenna

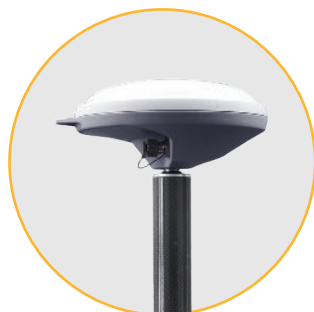
Internal Memory: 32GB

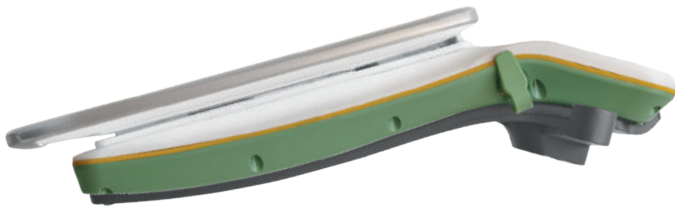
Dual Frequency RTK  
Multi Constellations Tracking

Windows, Android,  
iOS (BLE) Bluetooth Compatibility

USB/Serial Port for Charging and  
Wired Data Connection

Geodetic  
Position Accuracy





### System

- Multi Purpose GNSS Receiver
- Internal Memory: 32GB



### Channel Configuration

- 120 Channels



### GNSS Tracking

- GPS : L1, L2, L2C
- GLONASS : L1, L2
- BEIDOU : B1, B2
- GALILEO\*\* : E1, E5b
- QZSS : L1, L2C
- SBAS : L1 C/A



### Horizontal Position Accuracy (RMS)

- Single Point L1 1.5 m
- Single Point L1/L2 1.2 m
- SBAS 0.6 m
- DGPS 0.4 m
- RTK 1 cm + 1 ppm
- Initialization Time < 10 s
- Initialization Reliability > 99.9%



### Measurement Precision (RMS)

	GPS	GLONASS
- L1 Carrier Phase	0.5 mm	1 mm
- L2 Carrier Phase	1 mm	1 mm
- L2C Carrier Phase	1 mm	1 mm



### Formats

- NTRIP, intRTK
- Navigation Output Support for NMEA 0183, NovAtel\* ACSII and Binary Logs
- Differential Correction Support for RTCM 2.1, 2.3, 3.0, 3.1, 3.2, CMR, CMR+ and RTCA
- Raw data recording for Post Processing
- Field Upgradable Software
- Differential GPS Positioning



### Interface and Hardware

- USB (Disk and Charging)
- RF for External GNSS Antenna
- RS232 Serial
- Integrated 3.5G



### Environmental

- IP67 water/dustproof
- Temp: -20°C to +65°C



### Physical

- Size: 25 x 9.5 x 3 cm
- Weight: 620 grams



### Power

- Mini USB Charging (Power Bank compatible) @1 A
- Battery life 8-12 hours depending on the working mode and environmental conditions

\*NovAtel is a registered trademark of NovAtel Inc.

\*\*Optional



**Headquarters:**

Datavägen 21B  
SE-436 32 Askim, SWEDEN  
[info@satlabgps.com](mailto:info@satlabgps.com) | [www.satlabgps.com](http://www.satlabgps.com)

**Regional Offices:**

Jičín, CZECH REPUBLIC  
Ankara, TURKEY  
Scottsdale, USA  
Singapore, SINGAPORE  
Warsaw, POLAND

