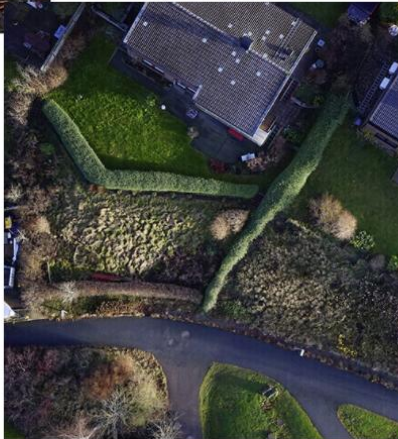




GPS GLOBAL SOLUTIONS

Long endurance, compact quad copter with PPK positioning



Flying Platform

Dimensions: 830x855x290mm
Wheelbase: 725 mm
Maximum take-off weight: 6,5 kg
Data transmission distance: 30km
Differential mode: Network RTK / PPK
Modular design: Quick removal and assembly without tools
One machine for multiple uses: Single machine multipurpose load compartment design that can change loads according to mission requirements
Carrying bag size: 650x640x310mm

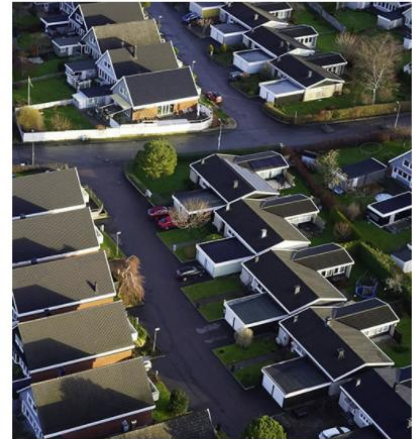
Flying Platform



Flight

Standard flight time: 60 minutes
Cruising speed: 10 m / sn
Maximum speed: 15m / s
Wind resistance: 12m / s (level 6)
Maximum ceiling: 4500m
Battery: 6S 22,8V 25000mAh
Operating temperature: -20 - 45 °C
Ground station software: Mission Planner

Flight



Load

Standard load: 700 g
Maximum load: 1500 g
Five lens camera
Single lens orthophoto camera
 6100

Load

5 lens professional photogrammetry camera for sharp and noise-free imagery with 120 MP spatial resolution



Camera Parameters

Effective Pixels: 24.3 million, total 120 million pixels
Sensor size: APS-C format (23.5*15.6mm)
Pixel size: 3.9um
Image frame: 6000*4000
Slope: 45 degree
Storage capacity: 640G
Exposure method: Flight control trigger exposure
Exposure time: ≥0.8S
Lens focal length: 35mm fixed focus

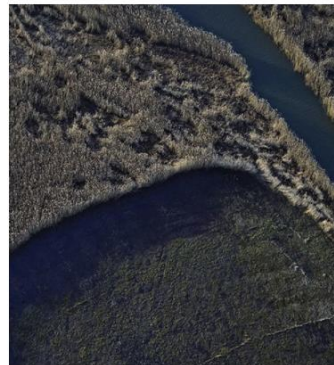
Camera Parameters



Sensor Parameters

Quantity: CMOS 5
Power on/off state: Auto boot

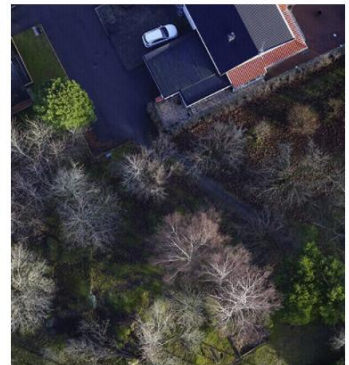
Sensor Parameters



Electrical Parameters

Camera power supply: External DC 12-35V , UAV external power supply
Picture download: USB Type-C cable

Electrical Parameters



Environmental

Operating temperature: -10°C-50°C
Working humidity: 95%

Environmental



No Tools Required

Screw propellers by bare hands, plug in battery, ready to fly. Literally no tools required.



120MP Oblique Photogrammetry

With the state of the art imaging technology, 5 lens camera with the total spatial resolution of 120 MP ensures that every single details are mapped no matter how they are vertically hidden.



Totally Autonomous Operation

Starting the operation is as easy as clicking a few buttons in mission planner. Rest is totally autonomous by advanced AutoPilot and other flight control systems.



Terrain Surface Tracing

In case the area of interest has irregular terrain, one click is enough to match the flight altitude according to the surface of the topography.



Long Endurance

The flight time of oblique photogrammetry is up to 60 minutes with single battery charge in order to ensure uninterrupted operation.



Resume Function

For any reason, any incomplete mission can be resumed at any time by resume function. Any unexpected change is not a problem anymore.



PPK Positioning

A Multifrequency PPK receiver is equipped with the drone to ensure that every single picture taken is geospatially accurate within 1 cm.

