

## X150 Laser Scanner

3D Laser Scanner



# X150

Tough & Light

X150 is a robust and easy-to-use scanner for quick surveys up to 150 m.

The multi-line full dome Lidar technology allows computing 3D models for a wide range of applications.

X150 comes with its own processing software and is also compatible with Stonex Cube-scan and Stonex Reconstructor software.

A perfect tool for fast topographic grade surveys and indoor floor maps.



## STRONG CASE

Streamlined aluminum alloy case.



## SMALL AND LIGHT

The scanner can be easily used by a single person thanks to its small size and weight of approximately 4 kg.



## SELF CALIBRATING

$\pm 5$  degrees tilt supplement angle for precise leveling. A 360° one-stop scan requires only 45s.



## PANORAMIC HDR CAMERA

Add colour to your scan.



## WIRELESS CONTROL

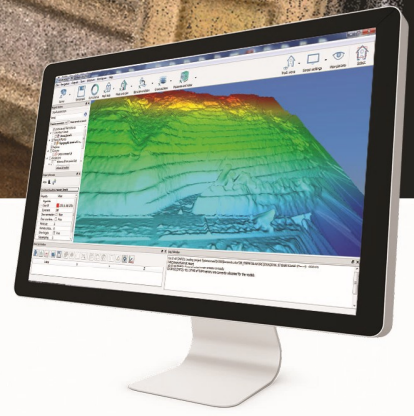
Through the dedicated APP it is possible to control the device remotely. Scan with one click and check quality via real-time preview.







LASER SCANNING SOLUTIONS



## 3D SOFTWARE

### STONEX 3D RECONSTRUCTOR

#### Powerful and usable 3D Software

The Stonex Reconstructor software allows you to manage and align point clouds acquired through laser scanners or other sensors (such as Stonex handheld scanners), clouds produced by photogrammetry and in general any point cloud.

Complete and clear workflows will guide you during the processing and the expandable modules are able to meet different needs, covering many fields, such as: surveying, mining, construction, architecture, cultural heritage, BIM, galleries etc.

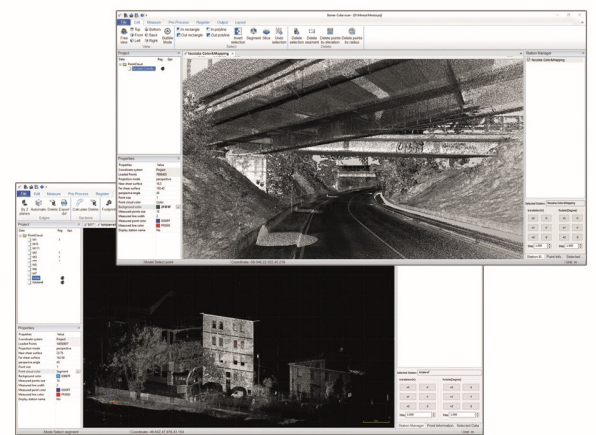
- MAIN FEATURES**
- LINE UP
  - CLOUD TOOLS
  - MESH & SHAPES
  - INSPECTION TOOL
  - PLANARITY/VERTICALITY
  - COLOR TOOL
  - ORTHOPHOTO
  - CAD OUTPUT
  - MEASUREMENT



#### Easy to use and versatile

Cube-scan is part of Stonex Cube-suite. Easy to use and learn, it allows basic 3D workflows. Import point clouds from Stonex scanner or different sensors and clean them through selection tools.

Aligns the point clouds by choosing from a variety of registration modes. Export registered point clouds to work with your own software or process measures, contour lines, edges and orthophotos.





# X150 TECHNICAL FEATURES

## PERFORMANCE

|                             |   |
|-----------------------------|---|
| Min Range                   | 0.2 m   |
| Max Range                   | 150 m   |
| Ranging Accuracy            | Up to 1cm   |
| Scanning Point Frequency    | 320.000 pts/s   |
| Field Of View               | Horizontal 360°<br>Vertical 280°  |
| Scanning Speed              | Less than 4 minutes for a 360° scan at max resolution - 45 s fast scan  |
| Horizontal resolution       | 18" @ max resolution (225s scan)<br>1' 30" @ min resolution (45 s scan) |
| Vertical resolution         | 11' 31"   |
| Dual Axis Tilt Compensation | ±5°   |
| Images                      | Panoramic camera  |

## CAMERA

|                         |  |
|-------------------------|--|
| Photo                   | 360° HDR   |
| Resolution              | 18 Megapixels  |
| Management              | By remote controller / Android device                      |
| Remote controller range | 10 m   |
| Storage & Connectivity  | Wi-Fi / Bluetooth / MicroSD card /<br>Micro USB / Ethernet |

## SYSTEM

|                   |  |
|-------------------|--|
| Data Storage      | 250GB (mSATA Hard disk)<br>+ 128GB (TF Card) |
| Data Transmission | GigE/TF Card                                 |
| Operation Mode    | Remote control by Android device             |

## PHYSICAL SPECIFICATION

|                       |                                  |
|-----------------------|----------------------------------|
| Dimension             | 364mm x 139.5mm x 122mm          |
| Net Weight            | Approx 4kg                       |
| Operating Temperature | 0° C to +50° C (32° F to 122° F) |
| Waterproof/Dustproof  | IP54                             |

## ELECTRICAL SPECIFICATION

|              |                      |
|--------------|----------------------|
| Battery Life | 2 batteries, 4h each |
| Battery Type | LiPo 6S              |
| Power Supply | 22.8 V               |

## Suggested control Tablets:

UT56 - 10" Android Tablet

UT32 - 8" Android Tablet



Illustrations, descriptions and technical specifications are not binding and may change

STONEX AUTHORIZED DEALER



**STONEX®**  
Part of **UniStrong**

Viale dell'Industria 53 - 20037 Paderno Dugnano (MI) - Italy  
Phone +39 02 78619201  
www.stonex.it | info@stonex.it