

X120^{GO} Laser Scanner

3D Handheld
Laser Scanner



X120^{GO} Accurate & Versatile

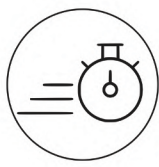
The system has a 360° rotating head, which can generate a 360°x270° point cloud coverage. Combined with the industry-level SLAM algorithm, it can obtain high-precision three-dimensional point cloud data of the surrounding environment without light and GPS.

Equipped with three 5MP cameras to generate a 200°FOV horizontal and 100°FOV vertical, capable of synchronously obtaining texture information and producing colour point clouds and partial panoramic images.

X120^{GO} can use GOapp to check and manage projects which will be updated and displayed synchronously. Real-time SLAM mapping and preview can be achieved via GOapp. GOpost can perform post-processing of collected data, generate high-precision and high-definition color point clouds, produce partial panoramic images, display point cloud and perform optimization processing.

X120^{GO} has an integrated structure design with a built-in control and storage system and built-in replaceable lithium batteries.

Once pressed the start button, X120^{GO} can start operations immediately, making data acquisition more efficient and convenient.



RAPIDITY AND REDUCED WORKLOAD

No more multiple scan station, just move around the scene to collect the entire 3D point cloud, without time-consuming cloud to cloud alignment. Download the full data right after the capture.



FLEXIBILITY

Combine indoor & outdoor data, even in the most demanding environments.



REAL TIME PREVIEW

See your scanning progress in real time using the dedicated Android App.



AUTOMATIC CONTROL POINT MEASUREMENT

When capturing data, X120^{GO} is able to collect reference points too. They can be matched with known control points to georeference the scans.



INTEGRATED CAMERAS

Three integrated 5MP cameras are able to cover the wide field of view of the scanner, obtaining coloured point cloud and panoramic images.





SLAM TECHNOLOGY

Simultaneous Localization And Mapping

STONEX SLAM technology delivers more range, more points per second and best in class on board processing algorithms to reach unmatched speed of capture and reliability even in the more demanding environments.

BUNDLED SOFTWARE



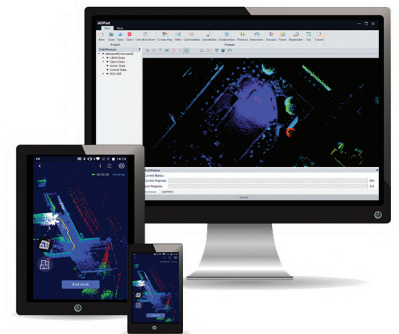
GOapp

GOapp is dedicate mobile application for X120^{GO}, to manage projects, real time point cloud display, image preview, firmware upgrade and other operations. The APP runs on Android operating system.



GOpost

Windows post processing software which performs optimization processing, colouring of point clouds and creation of panoramic images. You can also import control points to georeference the point cloud.



3D SOFTWARE



Cube-3d is a Photogrammetric software for mapping and aerial image processing, dedicated to land surveying specialists. It will transform image data into highly accurate digital maps and 3D models with extreme precision. It imports Cube-a surveys and is fully compatible with registered Stonex scans and with any third-party 3D models.

PointCab

Thanks to the collaboration between Stonex and PointCab, you can manage your point clouds with it. PointCab Origins is your Swiss army knife when it comes to the evaluation of point cloud data – working with all laser scanners and compatible with all CAD and BIM systems.

STONEX 3D RECONSTRUCTOR

Stonex Reconstructor software allows you to manage and align point clouds acquired through laser scanners or other sensors, clouds produced by photogrammetry and in general any point cloud. Expand functionality with add-on modules.

X120^{GO} TECHNICAL FEATURES

PERFORMANCE

Max Range	120 m
Min Range	0.5 m
Relative Accuracy	Up to 6 mm ¹
Vertical Resolution	16 channels
Scanning Point Frequency	320.000 pts/s
Field of View	360°x270°
Laser Class	Class 1
Echo Strength	8 bits

CAMERA

N° of Camera	3 (5 MP each - total 15 MP)
Cameras FOV	200°x100°
Image	Semi-spherical
RGB Point Cloud	Supported

SYSTEM

Memory	32GB (expandable)
Operation Mode	Realtime visualization (Android ²)
Communication	NFC, WI-FI

ELECTRICAL SPECIFICATION

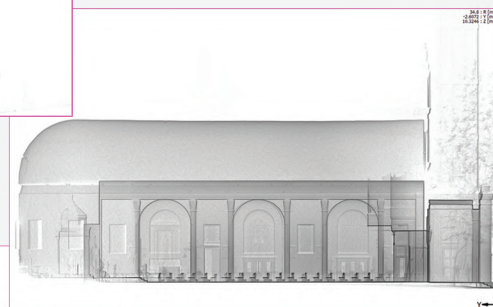
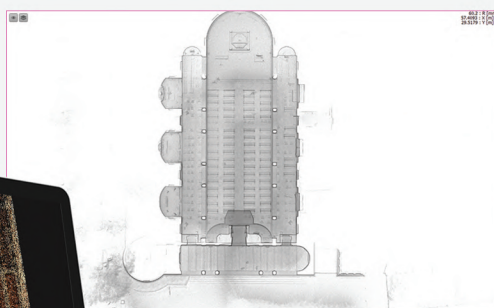
Power Consumption	25W
Supply Voltage	20-30V
Operating Time	5h (2 batteries set - 2.5h each set)
Capacity	3350mAh x4

PHYSICAL SPECIFICATION

Weight	1,6 kg (without battery)
Size	372 mm x 163 mm x 106 mm
Operating Temperature	-10°C to +45°C (14°F to 113°F)
Operating Humidity	<85% RH
Waterproof/Dustproof	IP54

1. In controlled environment
2. Android 8 or above

Top data quality...



Illustrations, descriptions and technical specifications are not binding and may change

STONEX AUTHORIZED DEALER

STONEX®
Part of UniStrong

Viale dell'Industria 53 - 20037 Paderno Dugnano (MI) - Italy
Phone +39 02 78619201
www.stonex.it | info@stonex.it